

Configuration Manual

RG4100+ Gateway

Date: February 2020

Doc Version:1.0

English

Thank you for choosing our product. Please read the instructions carefully before operation. Follow these instructions to ensure that the product is functioning properly. The images shown in this manual are for illustrative purposes only.



For further details, please visit our Company's website

www.zkteco.com.

Copyright © 2020 ZKTECO CO., LTD. All rights reserved.

Without the prior written consent of ZKTeco, no portion of this manual can be copied or forwarded in any way or form. All parts of this manual belong to ZKTeco and its subsidiaries (hereinafter the "Company" or "ZKTeco").

Trademark

ZKTeco is a registered trademark of ZKTeco. Other trademarks involved in this manual are owned by their respective owners.

Disclaimer

This manual contains information on the operation and maintenance of the ZKTeco equipment. The copyright in all the documents, drawings, etc. in relation to the ZKTeco supplied equipment vests in and is the property of ZKTeco. The contents hereof should not be used or shared by the receiver with any third party without express written permission of ZKTeco.

The contents of this manual must be read as a whole before starting the operation and maintenance of the supplied equipment. If any of the content(s) of the manual seems unclear or incomplete, please contact ZKTeco before starting the operation and maintenance of the said equipment.

It is an essential pre-requisite for the satisfactory operation and maintenance that the operating and maintenance personnel are fully familiar with the design and that the said personnel have received thorough training in operating and maintaining the machine/unit/equipment. It is further essential for the safe operation of the machine/unit/equipment that personnel has read, understood and followed the safety instructions contained in the manual.

In case of any conflict between terms and conditions of this manual and the contract specifications, drawings, instruction sheets or any other contract-related documents, the contract conditions/documents shall prevail. The contract specific conditions/documents shall apply in priority. ZKTeco offers no warranty, guarantee or representation regarding the completeness of any information contained in this manual or any of the amendments made thereto. ZKTeco does not extend the warranty of any kind, including, without limitation, any warranty of design, merchantability or fitness for a particular purpose.

ZKTeco does not assume responsibility for any errors or omissions in the information or documents which are referenced by or linked to this manual. The entire risk as to the results and performance obtained from using the information is assumed by the user.

ZKTeco in no event shall be liable to the user or any third party for any incidental, consequential, indirect, special, or exemplary damages, including, without limitation, loss of business, loss of profits,

business interruption, loss of business information or any pecuniary loss, arising out of, in connection with, or relating to the use of the information contained in or referenced by this manual, even if ZKTeco has been advised of the possibility of such damages.

This manual and the information contained therein may include technical, other inaccuracies or typographical errors. ZKTeco periodically changes the information herein which will be incorporated into new additions/amendments to the manual. ZKTeco reserves the right to add, delete, amend or modify the information contained in the manual from time to time in the form of circulars, letters, notes, etc. for better operation and safety of the machine/unit/equipment. The said additions or amendments are meant for improvement /better operations of the machine/unit/equipment and such amendments shall not give any right to claim any compensation or damages under any circumstances.

ZKTeco shall in no way be responsible (i) in case the machine/unit/equipment malfunctions due to any non-compliance of the instructions contained in this manual (ii) in case of operation of the machine/unit/equipment beyond the rate limits (iii) in case of operation of the machine and equipment in conditions different from the prescribed conditions of the manual.

The product will be updated from time to time without prior notice. The latest operation procedures and relevant documents are available on <http://www.zkteco.com>

If there is any issue related to the product, please contact us.

Table of Contents

1. INTRODUCTION.....	5
2. INITIALIZING GATEWAY.....	5
3. LAN AND WAN CONNECTION.....	5
4. PC NETWORK CONFIGURATION.....	6
5. GATEWAY LOGIN.....	7
6. WAN SETTINGS.....	8
7. SERVER CONFIGURATION.....	9
8. INTERFACE SETTINGS.....	10

1. Introduction

The document describes in detail about the Gateway configuration procedures of RG4100+. The comprehensive steps are given below.

2. Initializing Gateway

Perform the following steps to initialize the Gateway.

1. Connect the power cable to the Gateway.
2. Press the Reset button at the backside of the Gateway with a needle and hold for 5 seconds. Once the button is released, the Gateway LED blinks and restarts automatically. The Gateway will be initialized to the factory settings.

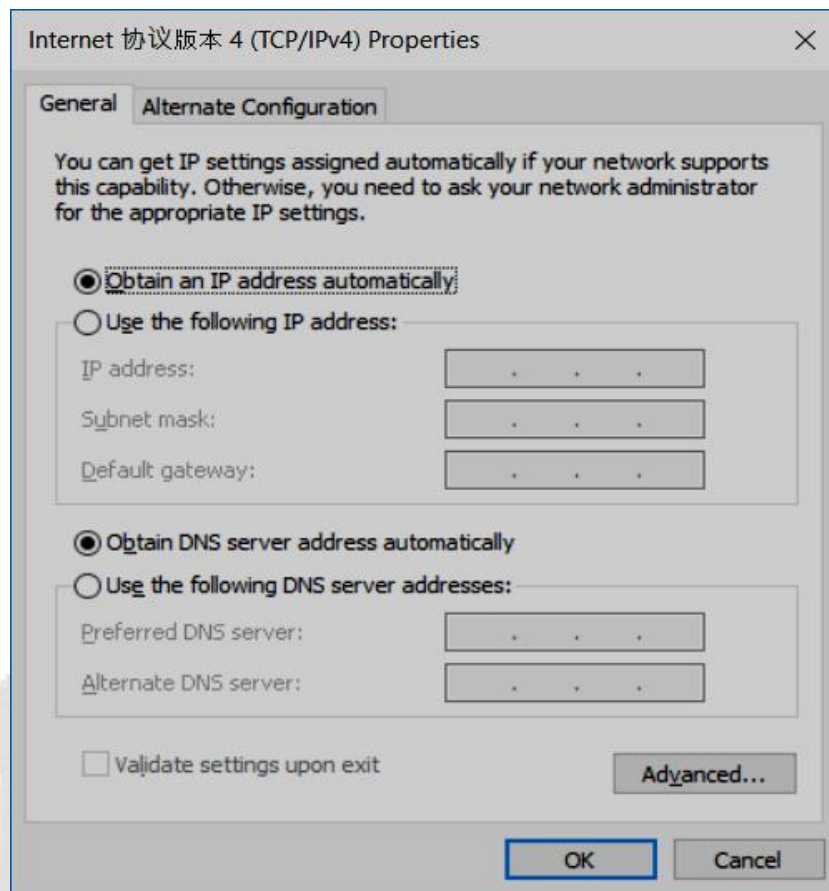
3. LAN and WAN connection

Perform the following steps for LAN and WAN connectivity.

1. Use a Network Cable to connect the PC to the LAN port of the Gateway, and in turn, the LAN LED blinks on the Gateway.
2. Connect the WAN port of the Gateway to the router, and in turn, the WAN LED blinks on the Gateway.

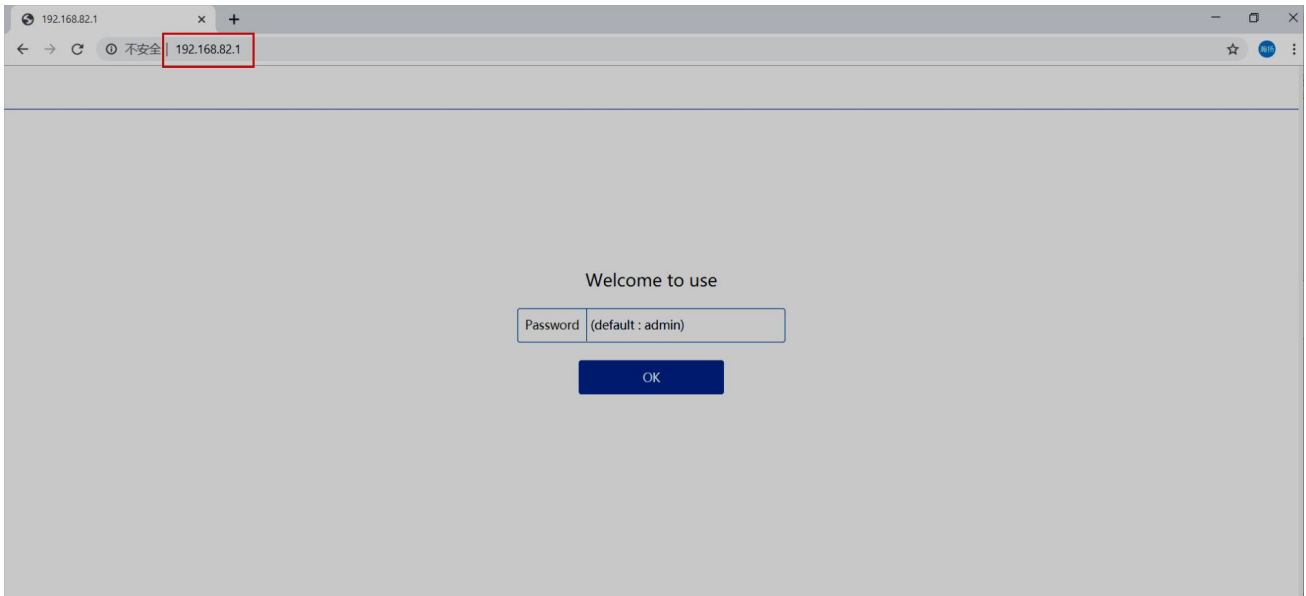
4. PC Network Configuration

1. Go to **Control Panel > Network and Internet Settings > Network and Sharing Center**; then on the **Change adapter** settings, right-click **Ethernet** and select **Properties**.
2. On the **Network** tab, select **Internet Protocol Version 4 (TCP/IPv4) > Properties**; then on the **General** tab, click **Obtain an IP address automatically** and click **OK** to configure your PC.

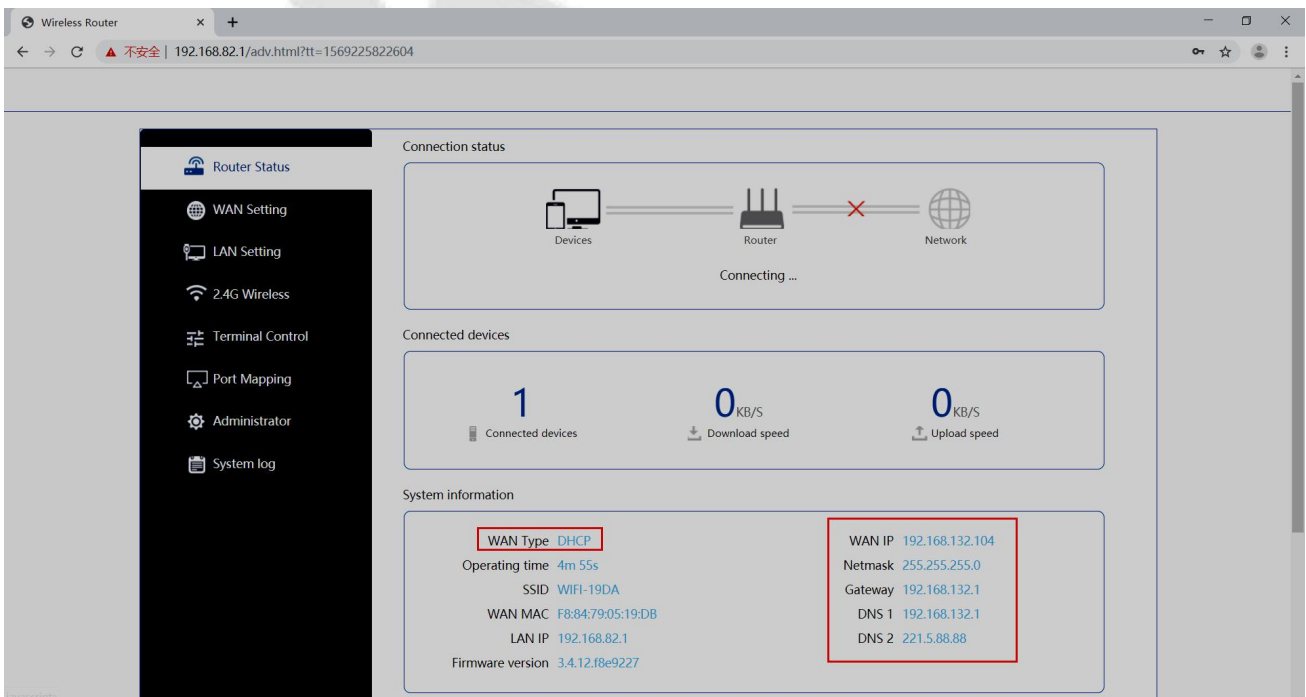


5. Gateway Login

1. Open the **Web Browser**, and on the **Address Bar**, enter the Default Gateway IP Address **192.168.82.1** to open the **Gateway Login Page** and enter the default login password **admin**.



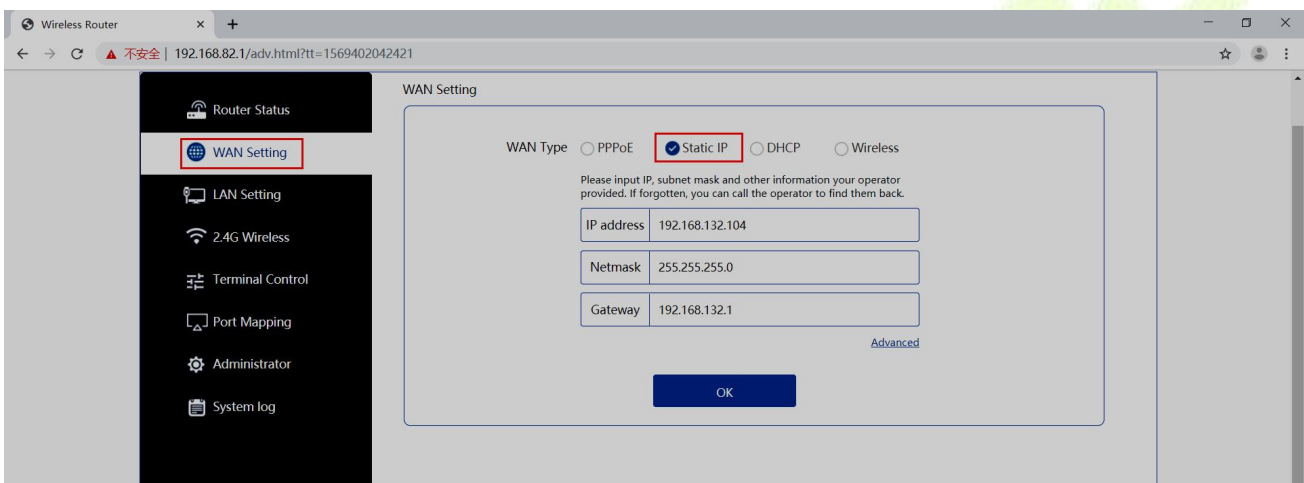
2. After login, the **Router Status** Interface gets displayed as shown below. The System fetches the DHCP information automatically and obtains the WAN IP address (e.g. 192.168.132.104).



6. WAN Settings

1. On the **WAN Setting** Interface, click **Static IP** for a stable connection, and then on the **IP address, Netmask and Gateway** fields enter the WAN IP, Netmask, and the Gateway address details provided under **System information** on the **Router Status** Interface, to access the internet.
2. After entering the details, click **OK** to save, where the Gateway will restart automatically and updates the WAN IP configuration successfully.

Note: DHCP and Wireless options are not recommended to be selected as WAN Type.



7. Server Configuration

1. On the **Web Browser**, enter the default LAN IP address with the port number **44444** (e.g., 192.168.82.1:44444), and it displays the **Server Configuration Page** as shown below:

Wireless Router x index.html x +

← → ↻ ⚠ 不安全 | 192.168.82.1:44444/index.html

[Select the language \(切换语言\)](#) [Change the password](#) [Reboot router](#)

Parameter Configuration Page

Password:

Working Mode:

Connect to Server Re-try Times:

Frame Interval (ms):

Connection Idle Timeout(s):

Remote Server Detection interval(s):

Local Port:

Connect to Remote Server Timeout(s):

Remote Server 01(format:ip port):

Remote Server 02(format:ip port):

Remote Server 03(format:ip port):

Remote Server 04(format:ip port):

Remote Server 05(format:ip port):

Access WEB By WAN Enabled:

OTA Enabled:

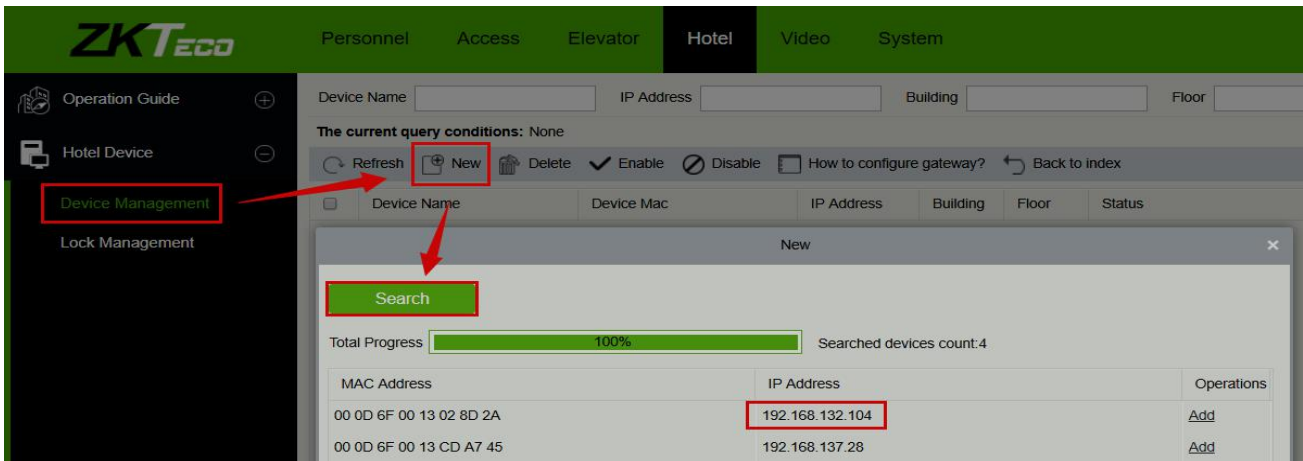
OTA Server(format:ip port):

OK

2. On the **Remote Server 01** field, enter your **ZKBiosecurity Server IP** address with the port number **6789** (e.g., 192.168.100.169 6789); then on the **Password** field, enter the default password **66666666**, and then click **OK**.
3. **Manually restart** the Gateway to save the configuration, and now you can move the Network Cable away from the LAN port and connect your PC with the router again.

8. Interface Settings

1. Login to **ZKBiosecurity**, and on the **Hotel** module, click **Hotel Device > Device Management**.
2. On the **Device Management** Interface, click **New**, and then click **Search**. The corresponding Gateway will be displayed as shown below:



3. On the **Operations** column, click **Add** to add the Gateway in the software, then on the **Add** interface, enter the **Device Name**, **Building name**, and **Floor number** details, and click **OK** to save.

The 'Add' dialog box contains the following fields:

- Device Name*: A8
- Device Mac: 00 0D 6F 00 13 02 8D 2A
- IP Address: 192.168.132.104
- Building: A
- Floor: 8

Buttons: OK, Cancel

- The newly added Gateway information will be displayed on the list as shown below.

Refresh New Delete Enable Disable How to configure gateway? Back to index								
Device Name	Device Mac	IP Address	Building	Floor	Status	Enable	Operations	
A8	00 0D 6F 00 13 02 8D 2A	192.168.132.104	A	8	⊘	⊘	Edit Delete	

- Now select the Gateway from the list and click **Enable**, where the **Status** and the **Enable** column will turn to the green state, which means the Gateway is **active/online** mode and will take 1 hour to accept the ZigBee connection from locks so that you can swipe the Net-in card on the locks.

Refresh New Delete Enable Disable How to configure gateway? Back to index								
Device Name	Device Mac	IP Address	Building	Floor	Status	Enable	Operations	
A8	00 0D 6F 00 13 02 8D 2A	192.168.132.104	A	8	✔	✔	Edit Delete	

ZKTeco Industrial Park, No. 26, 188 Industrial Road,
Tangxia Town, Dongguan, China.

Phone : +86 769 - 82109991

Fax : +86 755 - 89602394

www.zkteco.com

