
**Portable video under vehicle
inspection**



Overview.....	1
Structure analysis.....	2
(1) Main components :	2
(2) Structure :	3
Technical parameters.....	4
Instructions.....	5
(1) Display button function :	5
(2) Cloud controlling :	7
(3) Charging	7
(4) System Settings :	8
Precautions and maintenance.....	12

● Overview

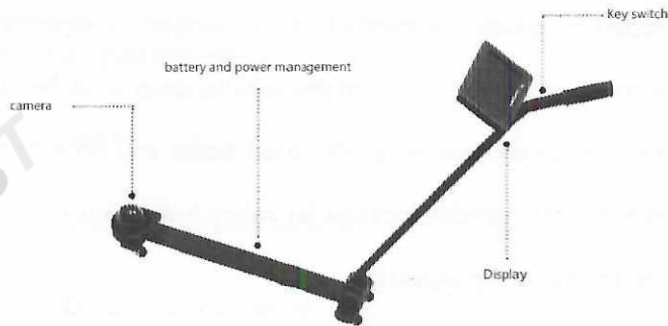
Thank you for choosing the product firstly,which is mainly used to check the condition of the bottom of the vehicle: to confirm whether the bottom of the vehicle has hidden suspicious prohibited items, dangerous explosives, illegal changes in the structure of the bottom of the vehicle, deep scratches and so on. Also can be used for some pipelines, shafts, black boxes and other human body inconvenient to reach the invisible location for safety inspection.

Mainly including the following aspects:

- Product structure analysis
- Product technical parameters
- Product instructions
- Attractors to safeguard

● Structure analysis

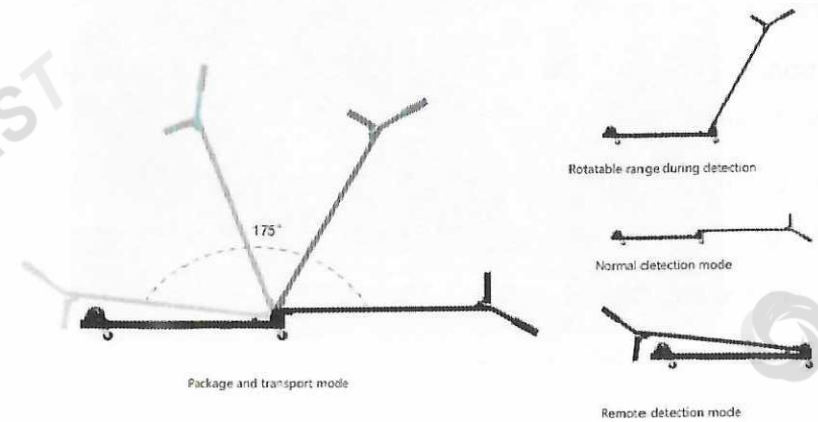
(1) Main components :



- **Monitor:** display real-time monitoring screen, open and play back videos, capture and browse photos.
- **Battery and power management module:** it is located in the base and equipped with 12V/5200mA high-power battery.
- **Camera:** hemisphere cameras, around 175 ° rotation by remote controller, with infrared night vision function.

(2) Structure

Adapted two section of the folding structure, the maximum opening Angle of 175°,with total length of 180 cm, bearing pulley Angle is 22.5 ° ~ 355 °, convenient and flexible rotation.



● Technical parameters

- (1) single-chip dedicated power supply charging and discharging technology
- (2) the pulley maximum horizontal Angle 355 °, minimum of 22.5
- (3) using the environment temperature: - 20 °C ~ + 60 °C
- (4) camera speed: horizontal 12 degrees/second
- (5) definition: 1.3 million pixels, 1/3 SONY CCD infrared image sensor, infrared night vision
- (6) remote control: control the camera to rotate left and right, automatically rotate and stop
- (7) operating current: 400mA
- (8) display: color 7inch, 800*480(RGB)
- (9) power consumption: 6800mW
- (10) battery capacity: 5200mAH
- (11) working voltage: 9 ~ 12.6v
- (12) continuous working time: 8 hours
- (13) volume: 1020*180*280mm

● Instructions

(1) Display button functions:



CHARGING HOLE

VIDEO

ON OFF

MENU

VIDEO PLAYBACK AND OVERTURN

- **V1/V2 key** : Switch between video mode and real-time monitoring

mode.

- **"↺" key** : Video playback, pause/play button, after entering the system Settings, you can use the rollover confirmation button.
- **Menu key** : Menu button, enter the system Settings, in the display of other screen, press the menu button can return to real-time monitoring mode.
- **"+" "-" key** : After entering system Settings, scroll up and down to set options; In real-time monitoring mode, press "-" to take photos, and press "-" to view photos. Press the "+" key to play back the last video, and press the "-" key to play back the next video.
- **Switch machine key** : Open and close the device, the shutdown time by more than 3 seconds to boot, boot time by more than 3 seconds to shut down.

(2) Cloud controlling



The left and right buttons of the remote control can control the rotation of the camera, or press the "AUTO" button to start automatic cruise.

(3) Charging

When the device is used for a period of time, the power indicator on the display screen indicates that the power is insufficient, or the device needs to be charged after automatic shutdown. Plug the power plug into the charging hole in the lower left corner of the screen for charging. The power indicator is red when charging and green after charging. It can be fully charged in about 4-5 hours.



Charging (red light)



idle/full (green light)

Notes:

- ① Firstly, you need to shut down your equipment before you recharge
- ② The products are equipped with special power adapters, please do not use the other power devices to charge the products.
- ③ If a device is not used continuously for a long time, a monthly charging is required to improve the device's battery life.

(4) system Settings:

Press the menu key to enter the system Settings, and continuously press the button to flip the system Settings.

① According to adjust :



Set the brightness, color and contrast of the image, "+/-" key up and down set options, V1/V2 key is value minus, "↺" key is value plus.

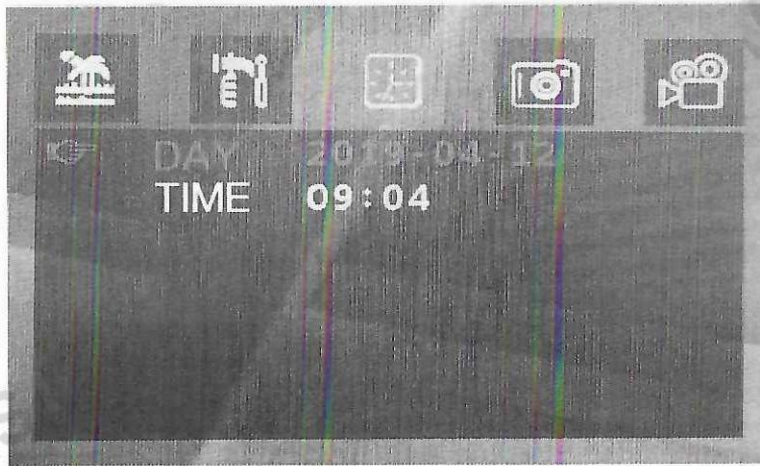
② Language and display direction adjustment :



The current device only supports switching between Chinese, English and Russian. Rotate the display image 90 degrees at a time. "+/-" key turns up and down the setting option, and "↺" key switches the

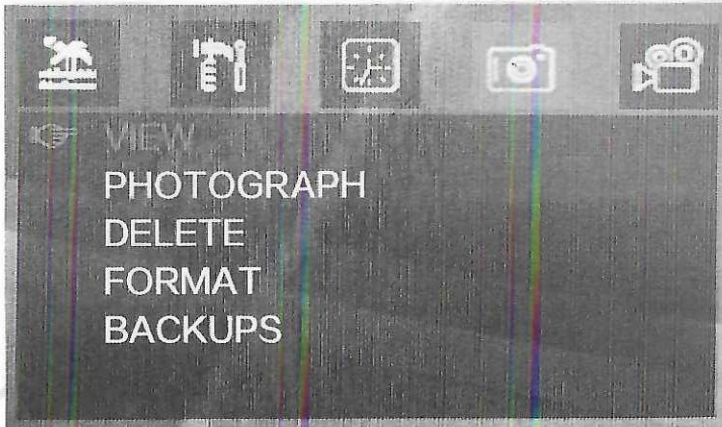
setting content.

③ Time adjustment :



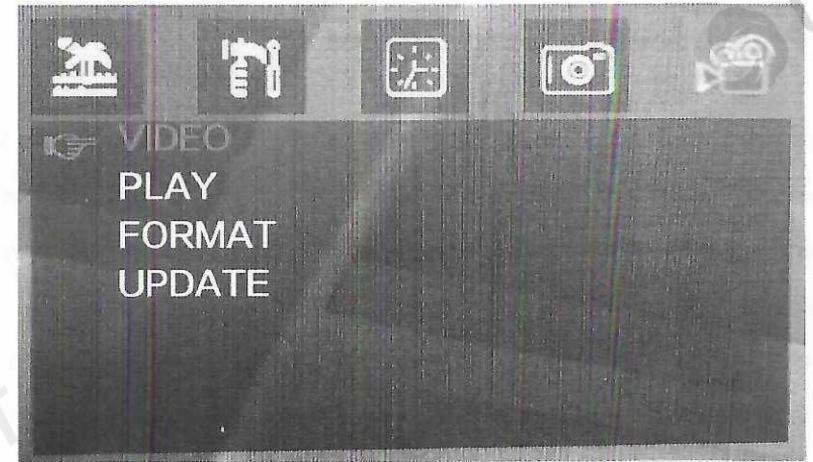
"↺" key toggles setting content," + "key value plus," - "key value minus.

④ Photo set :



Take photos and view the captured photos, delete, format and backup the photos. "+/-" key up and down to set options, "↺" "key to confirm.

⑤ Video setting :



This setting can enable recording function to play recorded video and format all video files. Upgrade to screen manufacturer internal use function. "+/-" key up and down to set options, "↺" "key to confirm.

- **Precautions and maintenance**

①this product is a non-waterproof equipment. It is not allowed to work outdoors in rain and snow weather, and it is not allowed to cross the water surface. Otherwise, the circuit of the equipment may be damaged.

②the equipment is not anti-falling products. Please handle it with care in the process of handling, so as to avoid equipment failure caused by damaged parts.

③ after the completion of the detection task, please shut down the device, fold it and put it into the special bag.

④long-term use of equipment, need to clean the grime on the camera and screen regularly, so as to avoid fuzzy and unclear image.

⑤ the product has been sealed inside, and there is no removable part for the user, so it cannot be disassembled by itself, otherwise it will lose the warranty right. The company reserves the right to further innovate the product, and no further notice will be given if the product specification and model are changed.