

FHT3300 series

Easy Assemble Full Height Turnstile



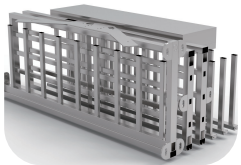
ZKTeco's FHT3300 series is a modular designed full height turnstile. The arms have an angle of 120 degrees, making it very comfortable for people to pass through. The FHT3300 series provides a secured perimeter protection for building and event venue.

Features



Durable

- FHT 3300 made from SUS304 stainless steel which offers superior protection and durability.



Modular

- Rotating shaft with modular design, easy to install and maintenance.



Security

- Good anti-tailgating ability, one time can only pass one person.



Safety

- In case of emergency, the turnstile will automatically unlock to allow unimpeded access.



Convenient

- Both sides have LED (Red/Green) to indicate a valid passing.

Specifications

Model	FHT3300
Power requirements	AC110V/220V, 50/60Hz
Operating temperature	-28°C to 60°C
Operating Humidity	0% to 95% RH (non-condensing)
Operating Environment	Indoor/ Outdoor
Speed of Throughput	Maximum 20/ minute
MCBF	1 million
Lane Width	625mm
Footprint	1470*1382.5mm (L*W)
Dimension	1470*1382.5*2182mm (L*W*H)
Dimension with Packaging	1200*2100*1200mm (L*W*H)
Net Weight	260kg
Gross Weight	300kg
Cabinet Material	SUS304 (Option SUS316)
Barrier Material	SUS304 (Option SUS316)
Barrier Movement	Rotating
Emergency mode	Supports
Security level	High
Ingress Protection Rating	IP54
Warranty	1 year

Dimension(mm)

